

Downloading apps

The apps are called “Bed Control™” and they have the following app logo in Apple App store and Google Play store:



How to download the App for iOS

Step 1: Please use your Apple device to log into App store

Step 2: Type “Bed Control” in the search column

Step 3: Select the “Bed Control” app

Step 4: Click install to download the app to your device

You can also scan this QR code to reach the Apple App Store.



How to download the App for Android

Step 1: Please use your Android device to log into Google Play Store

Step 2: Type “Bed Control” in the search column

Step 3: Select the “Bed Control” app

Step 4: Click install to download the app to your device

You can also scan this QR code to reach the Google Play Store.



Turn on Bluetooth® on your smart device to use the Bed Control™ App.

Connecting

Pairing to the Bluetooth® Adapter

Connect the Bluetooth® Adapter to the CBH Advanced or the TD3 simply by plugging it in. The Bluetooth® Adapter is a very compact unit requiring a minimum of space. No mounting is needed, just plug in the adapter and you are ready.

When the Bluetooth® Adapter is plugged into a powered TD3 or CBH Advanced, it will be in pairing mode for 3 minutes. A blue flashing LED will indicate this.

You pair your smart device to the Bluetooth® Adapter in the app.

Enable Bluetooth® on your smartphone or tablet. Open the Bed Control™ app and the app automatically searches for a Bluetooth® Adapter in pairing mode nearby and connects to that adapter.

The ID of the connected adapter is displayed. The Bluetooth® Adapter automatically re-establishes connection to the paired devices once they are within range and turned on.

Pairing to the TD4/TD5

Connecting the TD4/TD5 to the mains brings the TD4/TD5 in pairing mode for 3 minutes and the Under Bed Light will flash to indicate this. Enable Bluetooth® on your smart device. Open the Bed Control™ app and the app automatically searches for a TD4/TD5 in pairing mode nearby and connects to that TD4/TD5. The ID of the connected bed is displayed. The smart device and the TWINDRIVE® system are now paired up and the app will guide you through the onboarding flow.

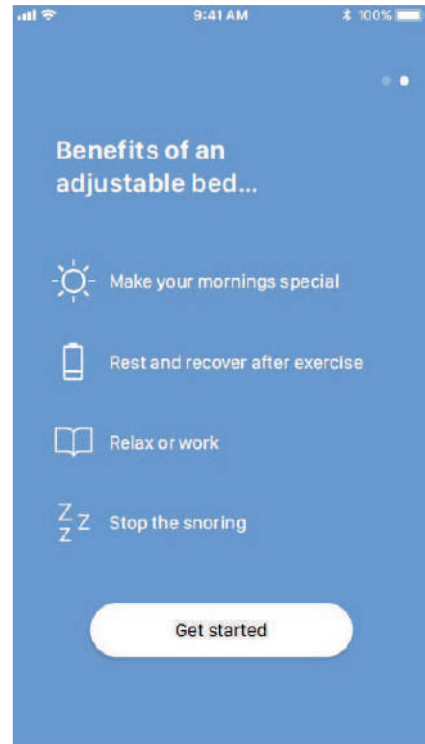
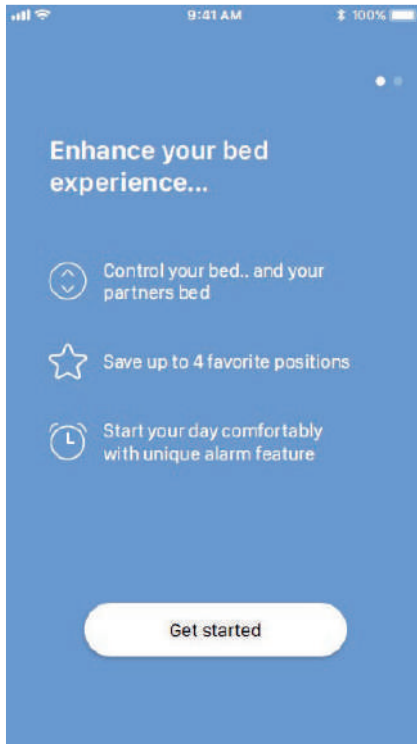
Switching between the Bed Control™ App and the hand control

You can connect both the Bed Control™ App and a hand control to a Bluetooth® Adapter or the TWINDRIVE® system. Both connections can be established, but you can only control the bed with one control at a time.

- Controlling the app with the phone/tablet: As long as the app is open and the operation page is displayed, the connection is active and you cannot use the paired hand control.
- If you wish to control the bed with the hand control instead, exit the app and wait for 5 seconds. It is not necessary to close the app completely, it can still run in the background. Now, the connection to the smart device is no longer active and you can use the hand control to adjust the bed.
- Closing the app completely will disconnect the app from the Bluetooth® Adapter or the TD4/TD5 and the connection needs to be re-established when the app is opened again.

Getting started

When you open the app, the display shows a list of options available in the app. If you swipe to the left, a list of benefits of an adjustable bed displays.



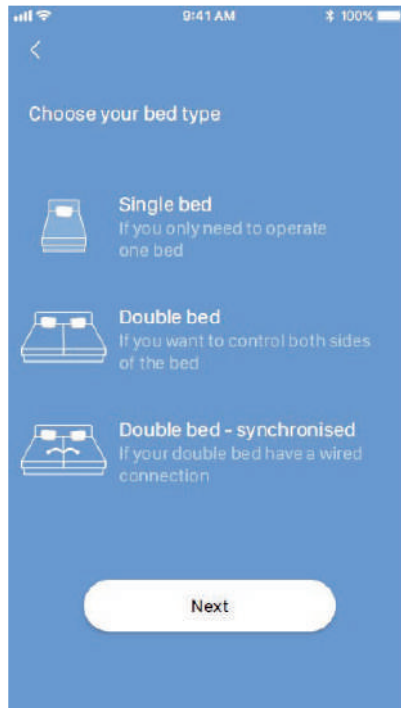
Press "Get started" on either screen.

For Android only:

Enable GPS location to allow the app to scan for Bluetooth® devices. If not done, the app will not be able to detect beds nearby in pairing mode and thus not work.

Onboarding flow

Start by choosing your bed type and press "Next" to start the onboarding flow.



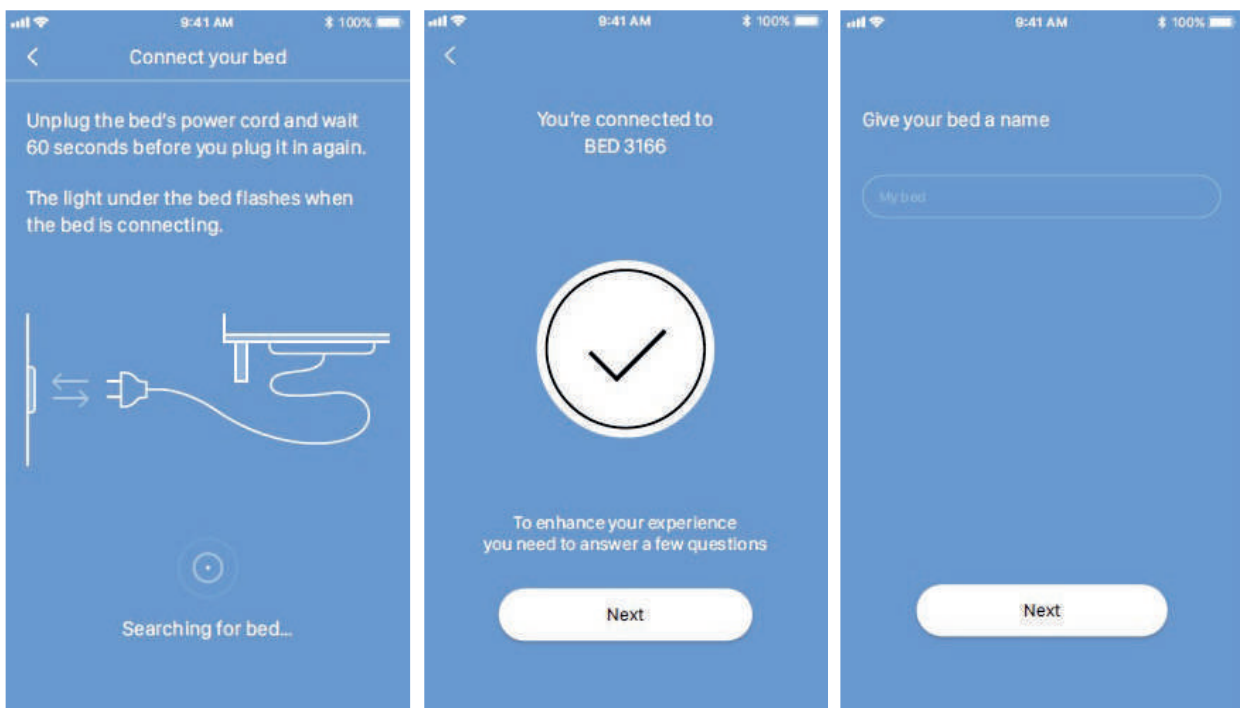
Single bed

Connect your bed to mains. The Under Bed Light (or the Bluetooth adapter) starts flashing to indicate that your bed is in pairing mode.

The app automatically searches for a bed in pairing mode nearby and connects to that bed. The ID of the connected bed is displayed.

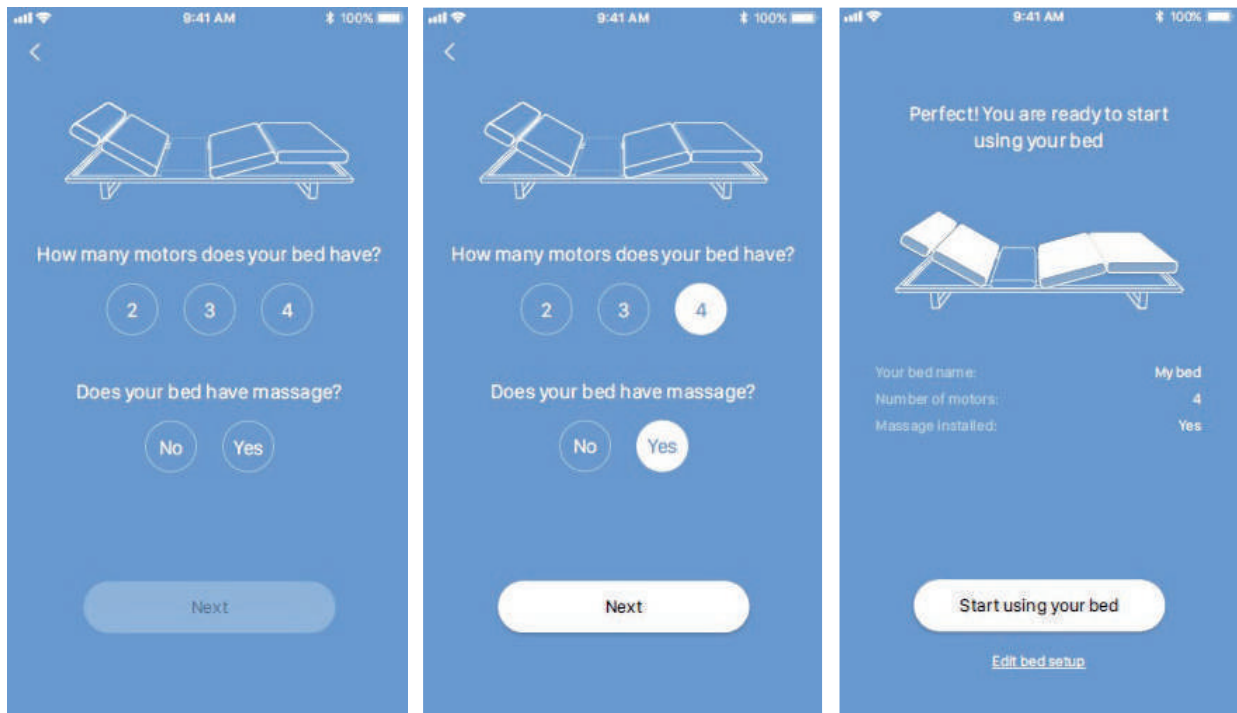
Press "Next".

Enter a bed name and press "Next".



Select the number of motors in your bed and whether your bed has massage or not, press "Next", and the screen will show your settings.

Should you have made wrong selections, press "Edit bed setup" to change the bed settings. When done, your bed is ready for use.



Double bed

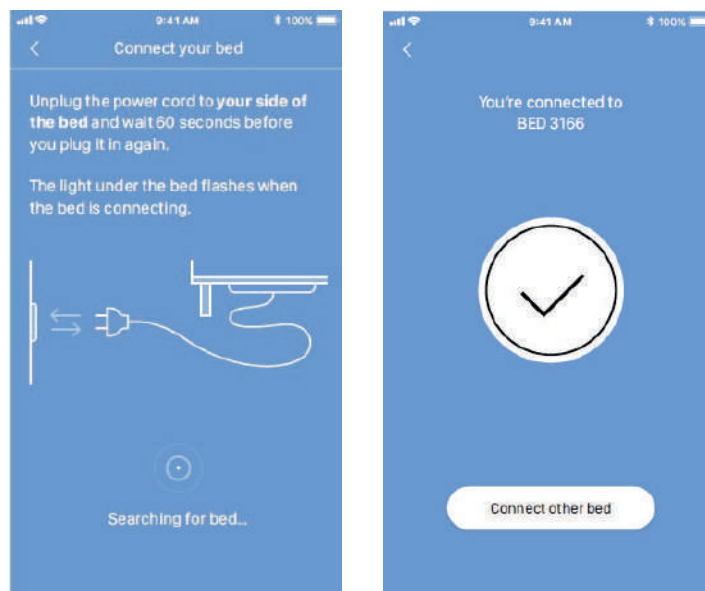


Ensure that only one bed at a time is in pairing mode.

Connect your side of the bed to mains. The Under Bed Light (or the Bluetooth adapter) starts flashing to indicate that your bed is in pairing mode.

The app automatically searches for a bed in pairing mode nearby and connects to that bed. The ID of the connected bed is displayed.

Press "Connect other bed" ..

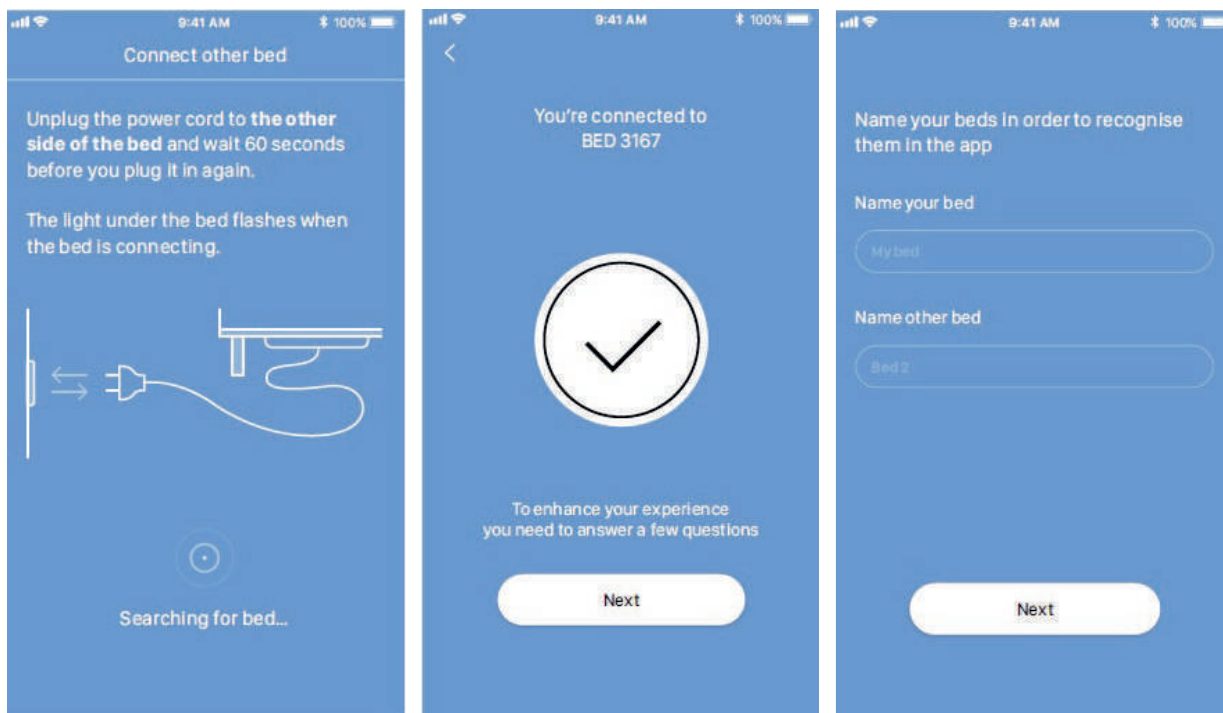


Connect the other side of the bed to mains. The Under Bed Light (or the Bluetooth adapter) starts flashing to indicate that the other bed is in pairing mode.

The app automatically searches for a bed in pairing mode nearby and connects to that bed. The ID of the connected bed is displayed.

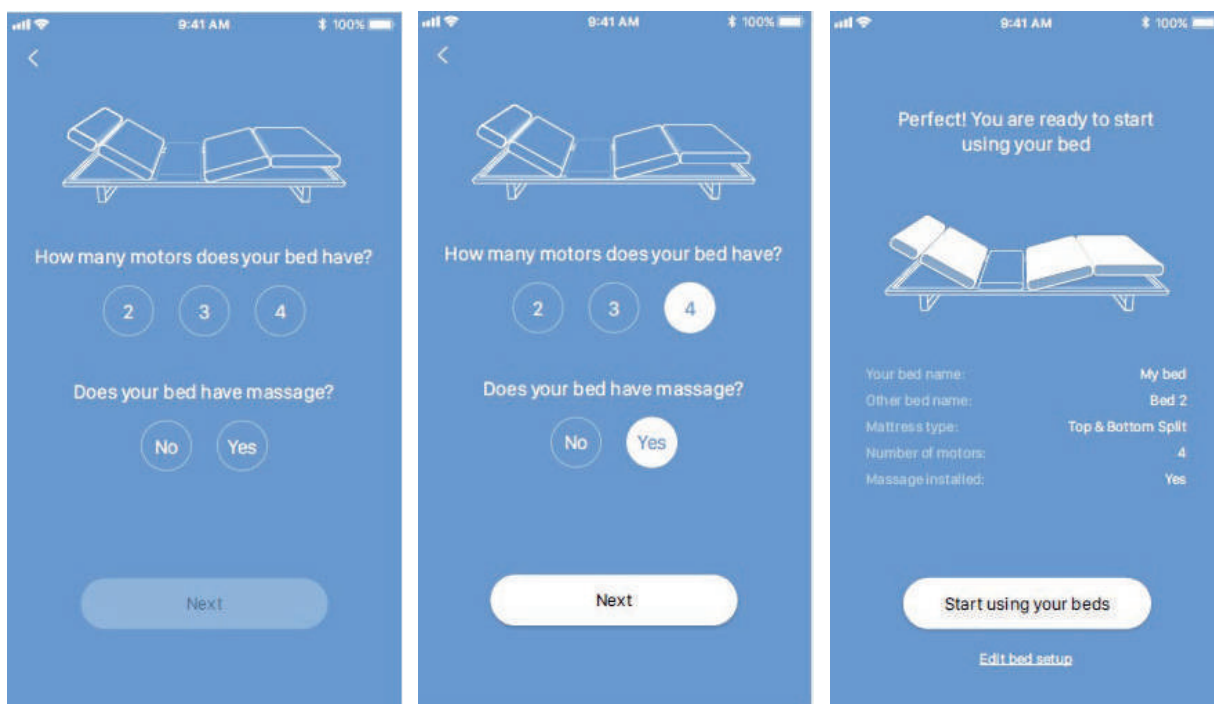
Press "Next".

Enter a bed name and press "Next".



Select the number of motors in your bed and whether your bed has massage or not, press "Next", and the screen will show your settings.

Should you have made wrong selections, press "Edit bed setup" to change the bed settings. When done, your bed is ready for use.



Double bed (synchronised)

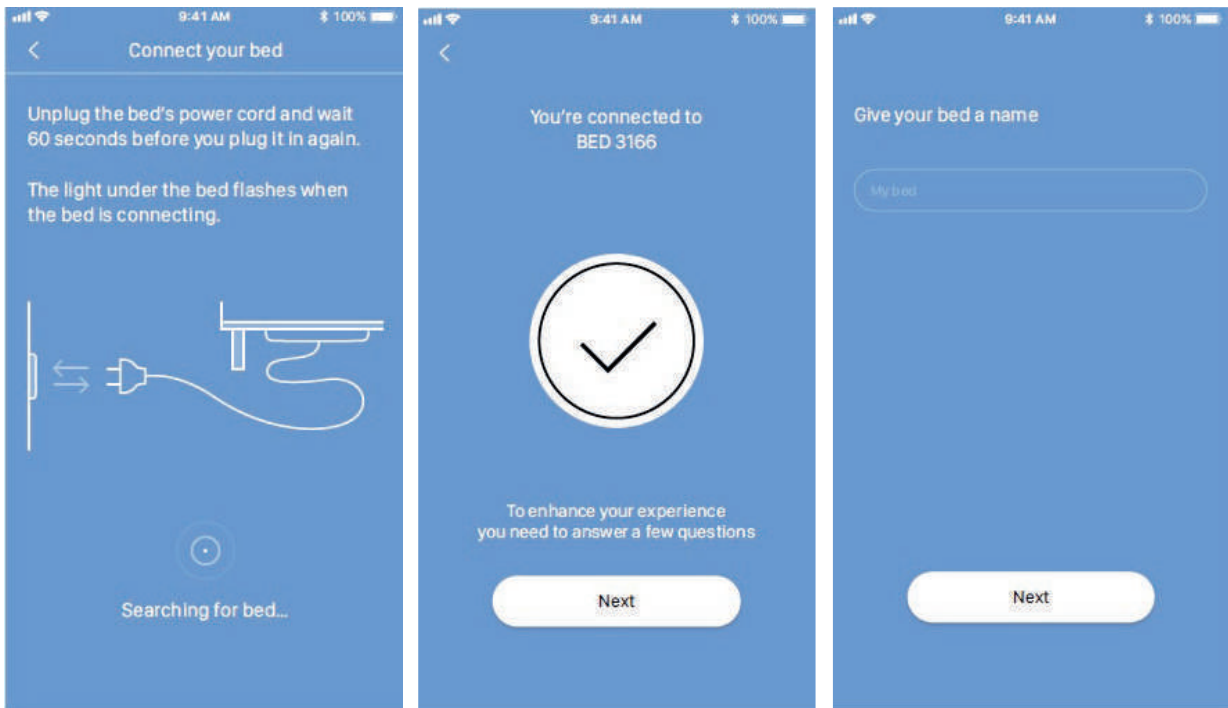
This setup is just like the single-bed setup, only the graphics show a double-bed instead of a single bed.

Connect your bed to mains. The Under Bed Light (or the Bluetooth adapter) starts flashing to indicate that your bed is in pairing mode.

The app automatically searches for a bed in pairing mode nearby and connects to that bed. The ID of the connected bed is displayed.

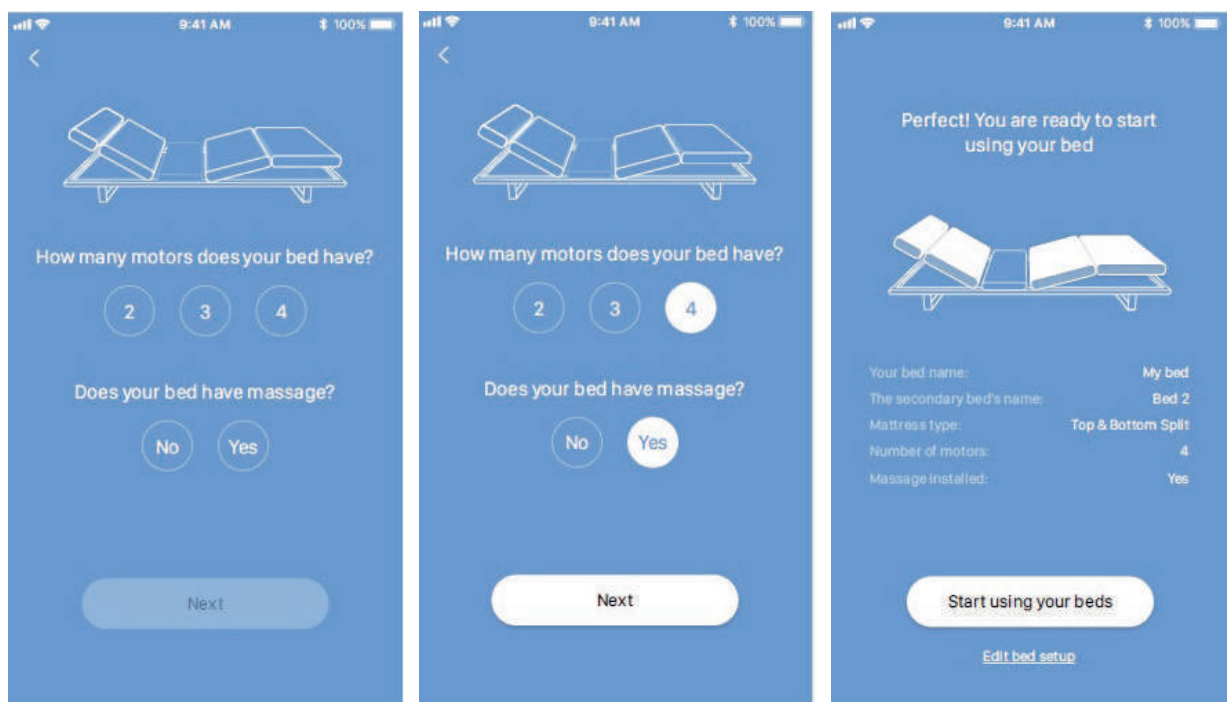
Press "Next".

Enter a bed name and press "Next".



Select the number of motors in your bed and whether your bed has massage or not, press "Next", and the screen will show your settings.

Should you have made wrong selections, press "Edit bed setup" to change the bed settings. When done, your bed is ready for use.



Operation

The Bed Control App consists of up to four different tabs to navigate between: "You", "Massage", "Alarm" and "More".

Please note that the "Massage" option is only available if you selected massage during the onboarding flow.



Enters the control screen for adjusting the bed

Control



Enters the massage screen for controlling the massage in the bed

Massage



Enters the alarm screen for setting up alarms and bed position or massage mode

Alarm

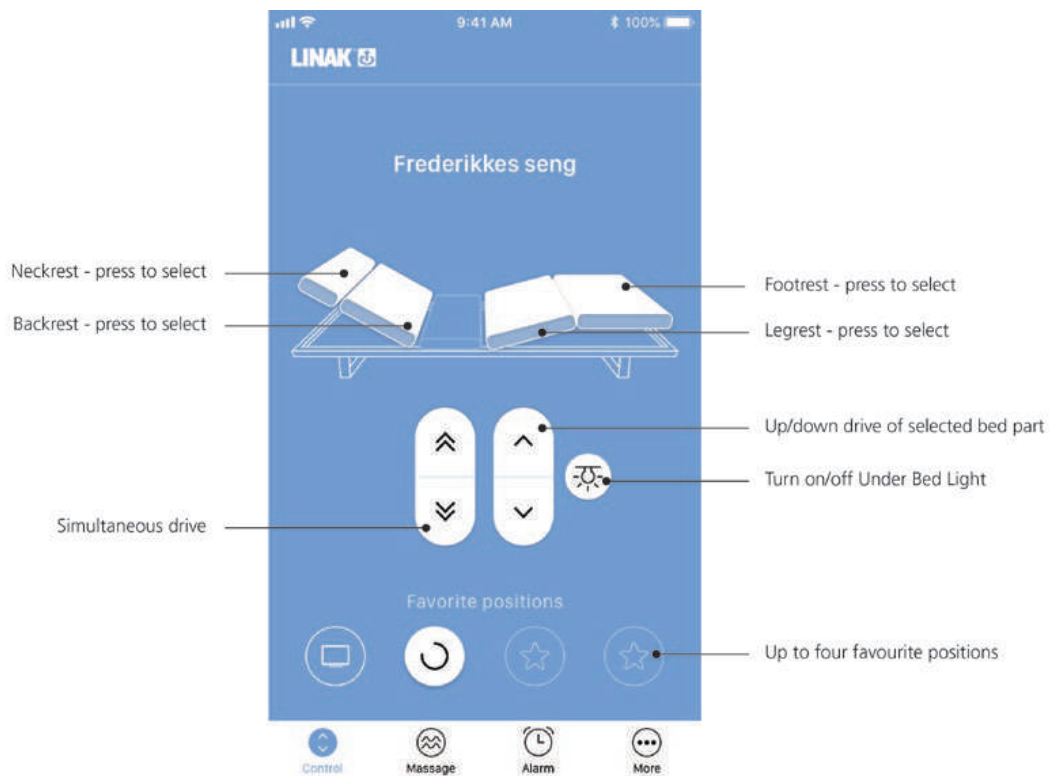


Enters the settings screen for adjustment of various app settings

More

Control screen

From the "Control" screen you can adjust the bed to various positions, save your favourite positions, and turn on/off the Under Bed Light.



Select back, leg, neck or foot

Select which part to operate back, leg, neck or foot. Use the single arrows to adjust up/down. Pressing the double arrows will highlight all parts of the bed and simultaneous drive is activated. Simultaneous drive moves back and leg up or down at the same time.

With a 4-motor system, the motor references have been defined to always be placed in the following channels in the control box:

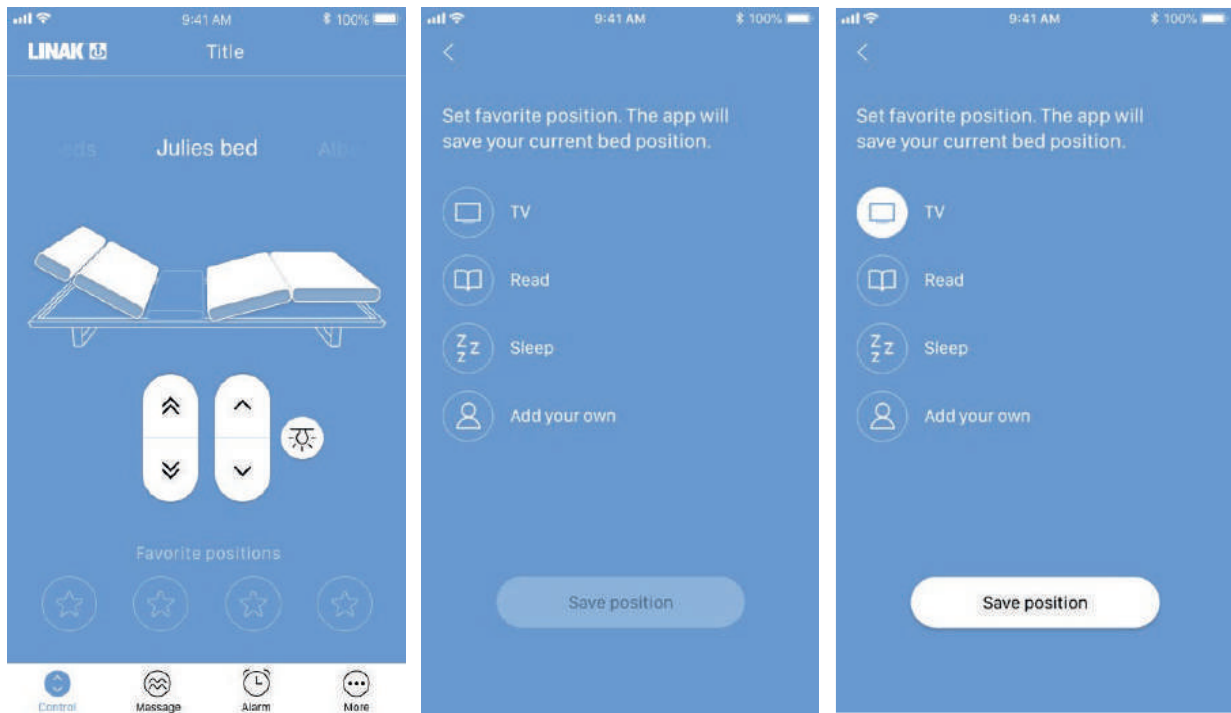
Back:	Reference 1
Leg:	Reference 2
Neck:	Reference 3
Foot:	Reference 4

Due to power restrictions, the simultaneous drive can only run on two motors at the same time. Thus, the motors are running in pairs and always as follows:

Upwards drive:	References 1 & 2, followed by references 3 & 4
Downwards drive:	References 3 & 4, followed by references 1 & 2

Favourite positions

You can save up to four favourite positions. Adjust the bed to the desired position, press a “star”, select a name/icon (e.g. TV), and save the position. When saved, the positions can be directly accessed by pressing the corresponding button.

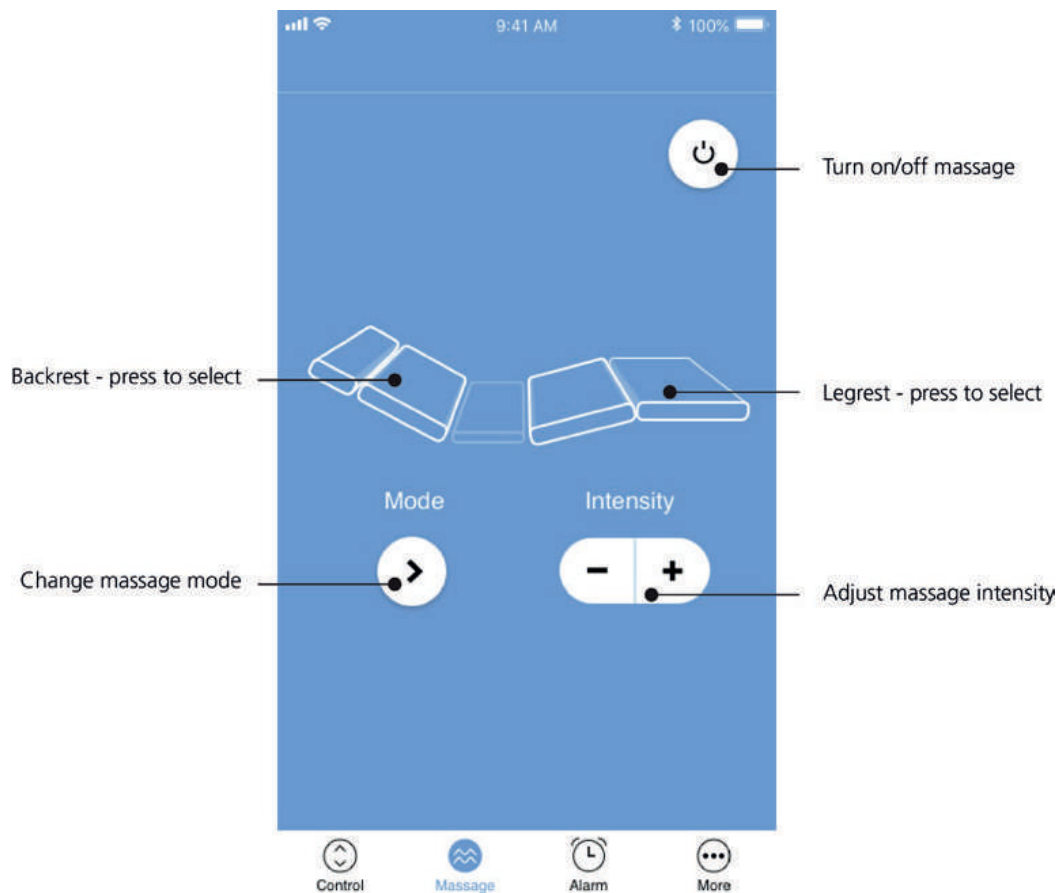


Renaming bed

The paired application can be renamed in the settings screen – choose the “More” tab in the bottom of the screen and go to “Bed setup”.

Message screen

Press "Message" to access the "Message" screen in which you can select for which parts of your bed to turn on/off the massage and adjust the massage mode and intensity.



Select back or leg rest

Select by pressing which part of the bed to start/stop or to adjust the massage on.

Change message mode

Toggle between the different massage modes. The number of modes to choose from is defined by the configuration in the CBH Advanced.

Adjust message intensity

Adjust the massage intensity up and down. Press "-" multiple times to turn off the massage.

Alarm screen

Press "Alarm" to access the alarm screen in which you can set the time for when you want to wake up. The alarm function depends on whether your bed is equipped with massage or not.

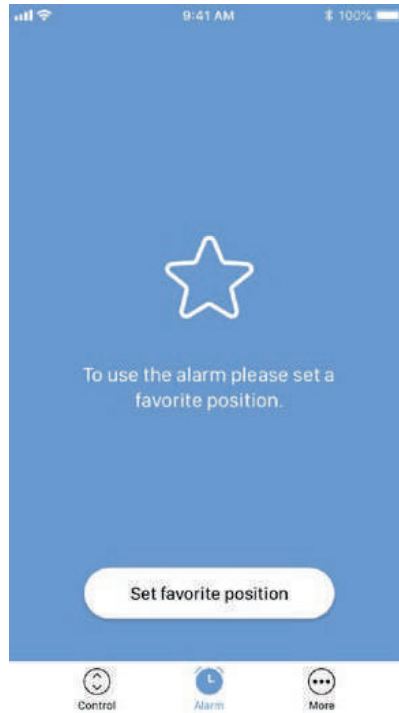


Automatic drive must be enabled for the alarm function to work.

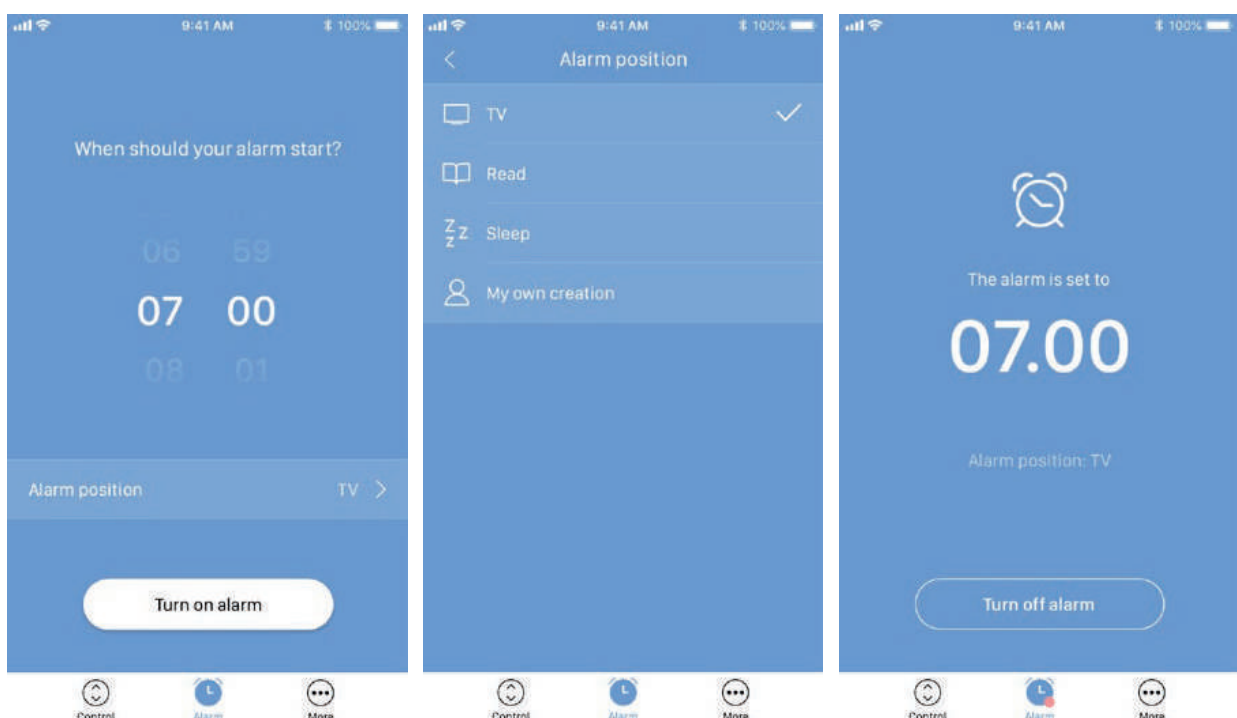
Alarm without massage

In a bed without massage, the alarm function drives the bed to a selected favourite position.

If none are saved, you will be prompted to set a favourite position, see instructions above.



Adjust the alarm time. To change the alarm position, press "Alarm position" and select another favourite position. When all settings are done, press "Turn on alarm". The set alarm time and position are shown on the "Alarm" page.



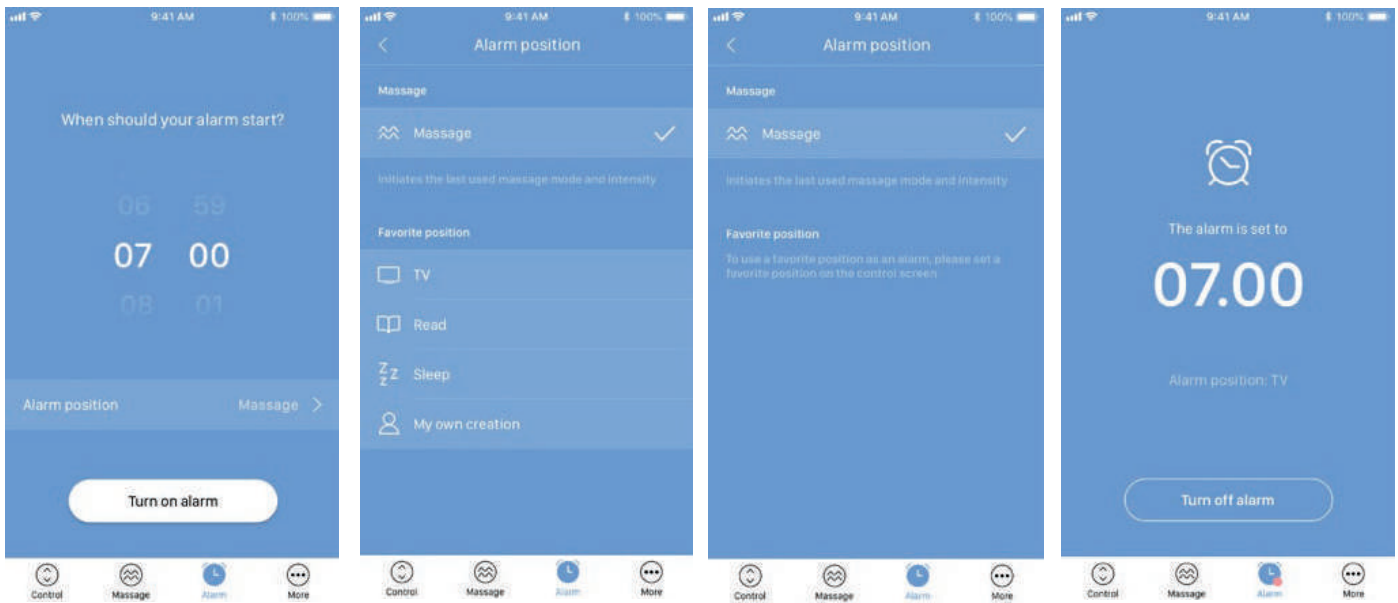
If you want the alarm to go off the next morning, you have to turn it on again.

Alarm with message

Adjust the alarm time. If one or more favourite positions have been saved, it is possible to choose to wake up to either message or bed drive to a favourite position. To change "Message" to a favourite position, press "Alarm position" and select a favourite position. When all settings are done, press "Turn on alarm". The set alarm time and position are shown on the "Alarm" page.

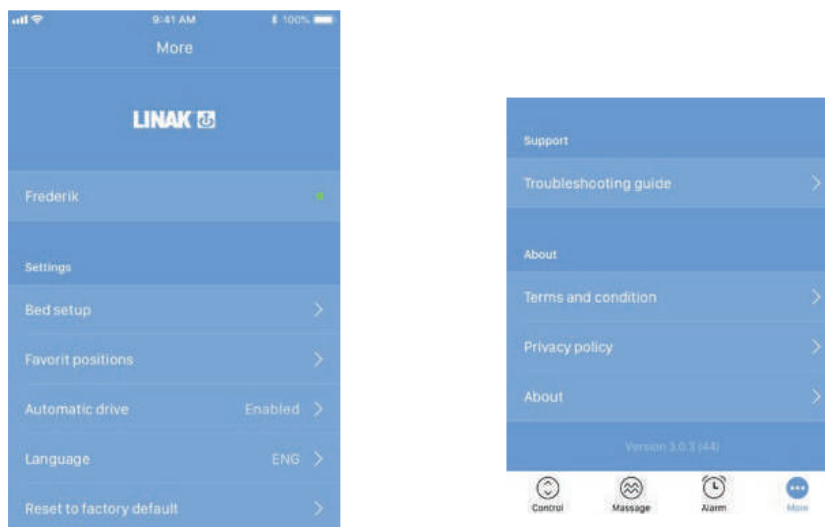


Do not close the app when an alarm is set as this will turn off the alarm. The app can run in the background, though.



More screen

Press "More" to get access to a list of setting options and information arranged in three groups (the graphics below show a split view).



Settings

In the "Settings" section you can change the bed setup and your favourite positions, enable/disable automatic drive, switch language, and reset the app to its default settings.

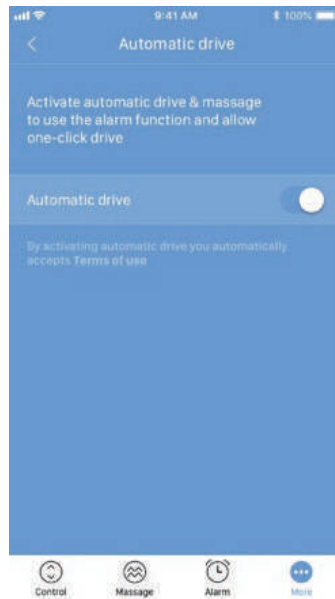
Automatic drive

If "Automatic drive" is enabled, you can make the bed adjust non-stop to any favourite position by just pressing the relevant button once. This function is called "one-click-drive".



You have to accept the terms, i.e. accept the responsibility of any danger that can occur under these circumstances, in the pop-up notification before this feature can be enabled.

If you press any button or close the app during this automatic drive, you will interrupt the bed adjustment.

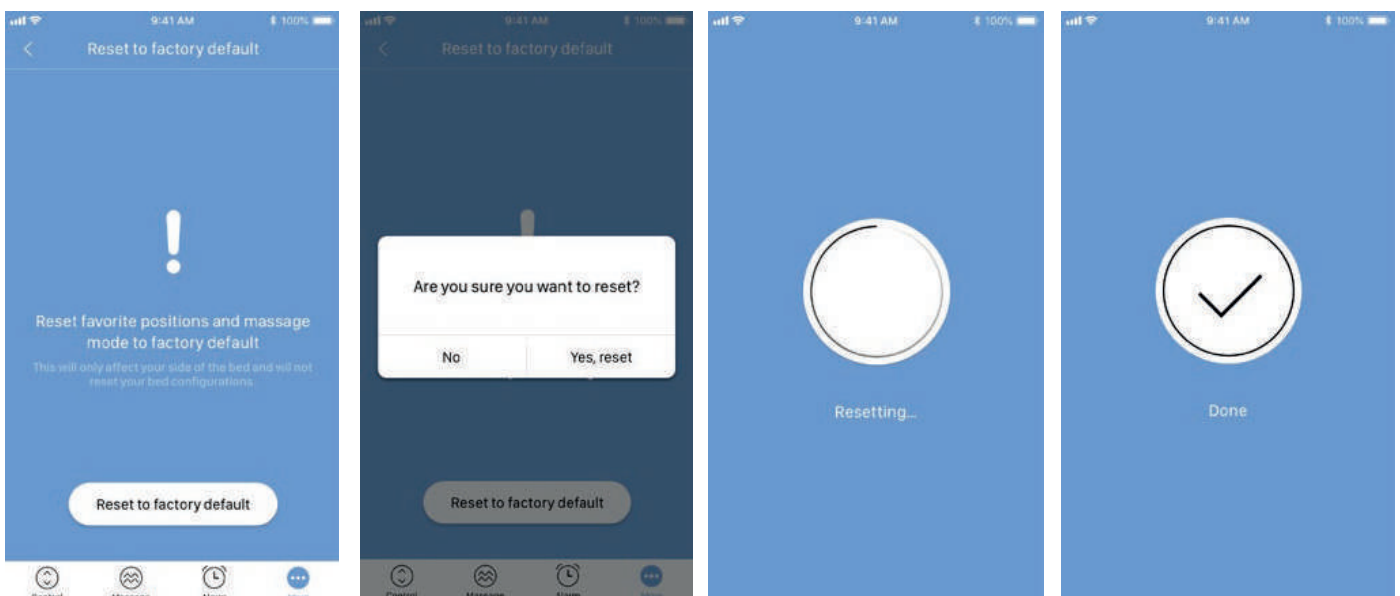


Language

The language is default set to the language of the operating system of your smart device. Choose between eight different languages in the app. The available languages are English, Danish, Spanish, French, Italian, Korean, Swedish and German.

Reset to factory default

When resetting the app to its factory default, only the changes made to your side of the bed, your favourite positions and your alarm settings will be reset.

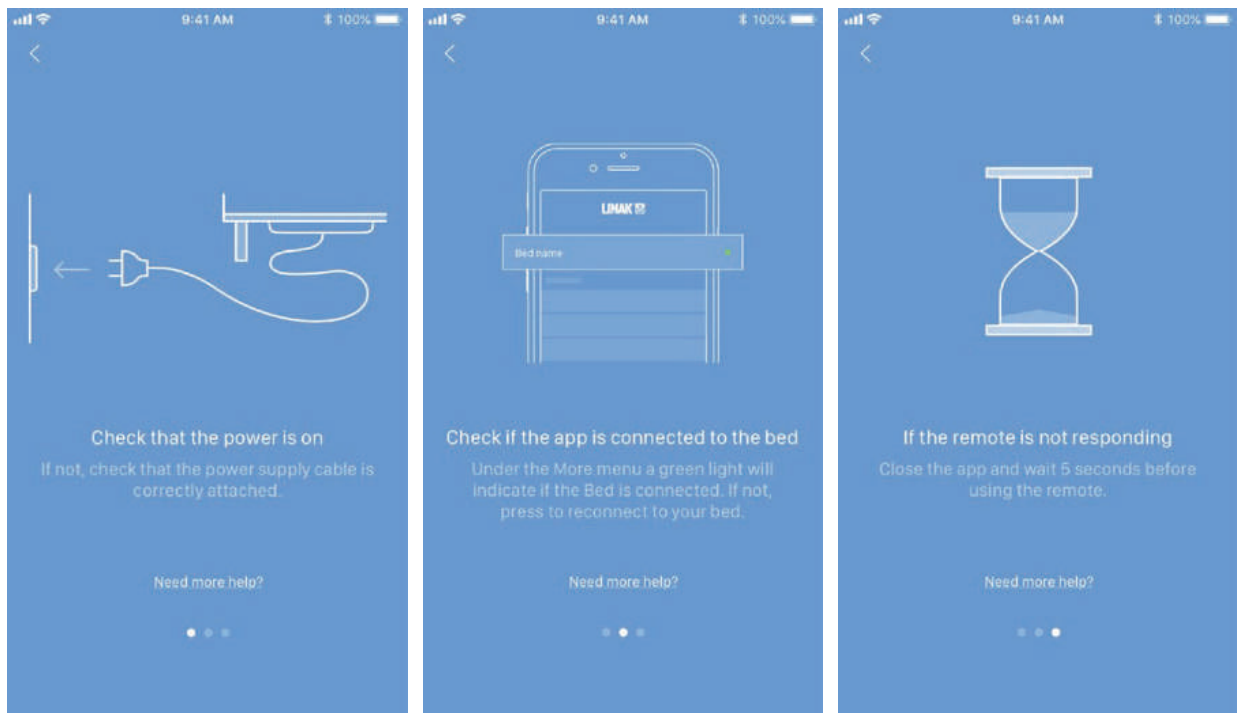


Support

In the "Support" section you can find the support tool.

Troubleshooting guide

The built-in troubleshooting guide can help you solve some common errors. Press "Need more help?" to get to the LINAK web page on which a video is available that will help solve the problem.



About

The "About" section contains the terms and conditions for using the Bed Control™ app as well as the LINAK privacy policy.

According to the privacy policy, LINAK respects your privacy and does not access or use any data entered in the app (such as favourite positions and bed names) or collected by the app (statistics). The information is stored only on your device and can therefore only be accessed in your device.

In "About" you will find the following links:

Product information

[Link](#) to LINAK website with information about this app.

Product support

[Link](#) to LINAK website with technical support.